



Sino-Dental® 2020

The Most Influential Dental Exhibition
in Asian-Pacific Region

Beijing · China
June 9-12, 2020

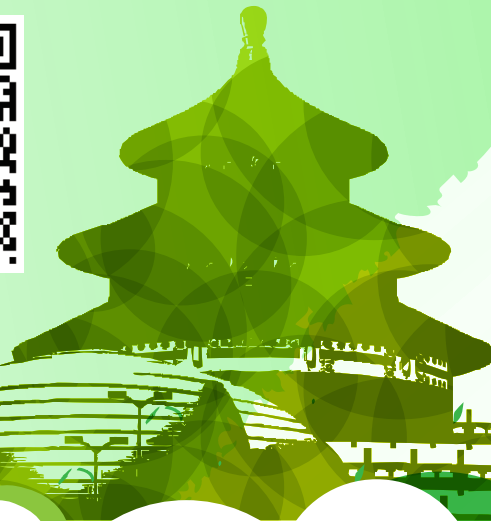
Contact Us:

Ms. Carol KANG, Ms. Taylor XIN

Tel: (86)10-8839 3917/3883

Email: info@sinodent.com.cn

www.sinodent.com.cn/en





Sino-Dental® 2020 Booth Reservation Notice

Dear Exhibitors,

Welcome to the 25th China International Dental Exhibition & Scientific Conference (Sino-Dental® 2020).

Exhibition Date: Jun 9-12, 2020

Venue: China National Convention Center (CNCC), Beijing

Website: www.sinodent.com.cn/en

For exhibitor services, please contact the organizing committee:

Ms. Carol KANG (Chief Coordinator), Ms. Taylor XIN (Daily Service)

Email: info@sinodent.com.cn / sino-dental@qq.com

Tel: +86-10-88393917/3883

Fax: +86-10-88393924

Information Release

All exhibition related information will be released on our official website. Major changes and any specified inquiries regarding exhibition shall be delivered and received via email. Please provide valid and complete contact information in your application. *If any changes occur, please timely notify Sino-Dental® to make sure your company will receive the notice in time.*

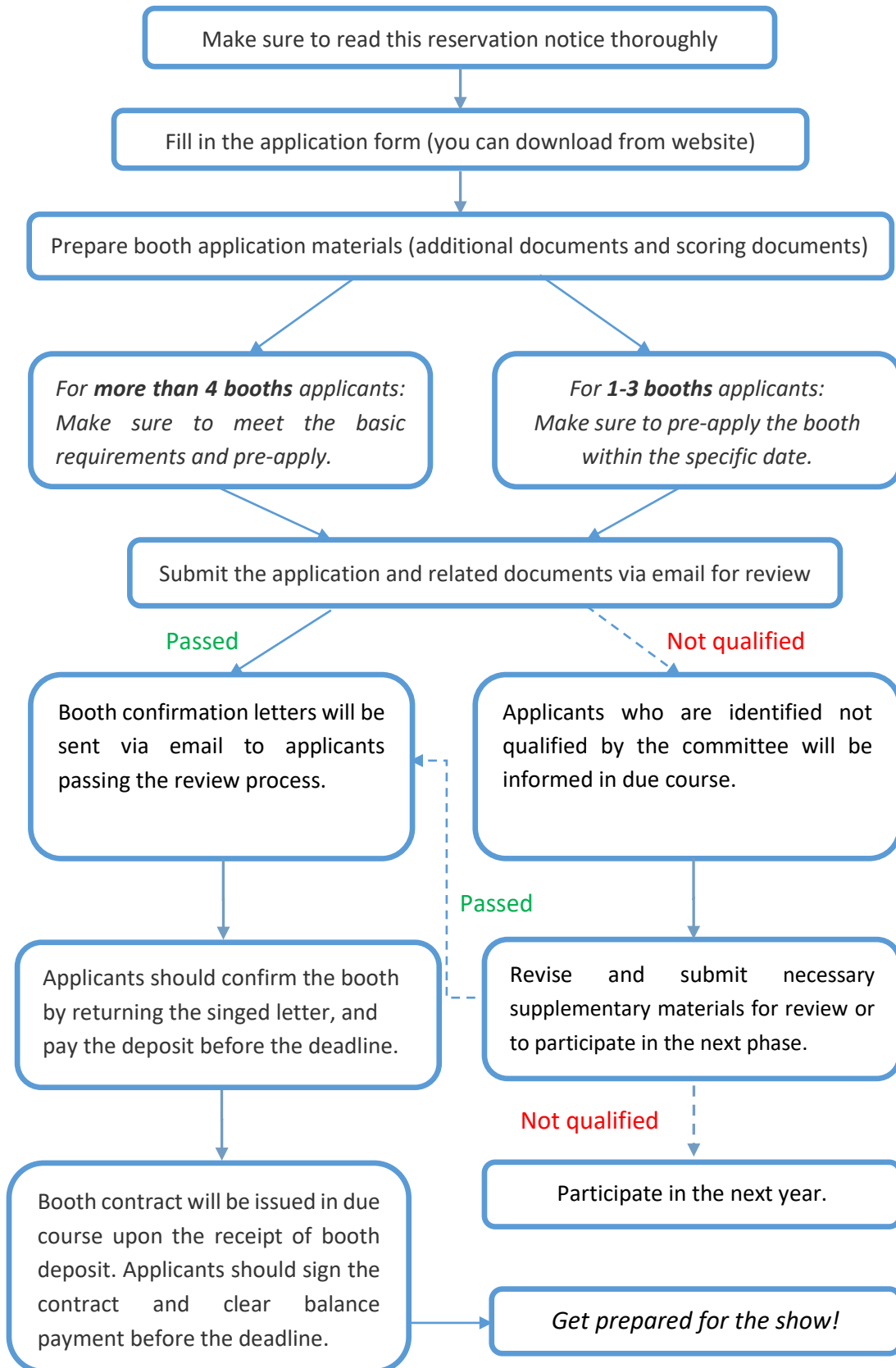
This booth reservation notice has 4 sections. Please read it thoroughly.

- I. Booth Reservation Procedure
- II. Booth Reservation Qualification Review Principles
- III. Working Principles
- IV. Booth Reservation Reminders



I. Booth Reservation Procedure

(1) Reservation Procedure





(2) Booking Schedule

Please submit the booth application according to the following 3 phases based on the different number of booths applied.

PHASE I: National Pavilion/ Regional Pavilion		
(Eligibility: pavilions officially organized by dental associations and/or with governments support)		
# OF BOOTHS	DATE	PROCEDURE
National Pavilions	Sep 1 - 25	Application Submission via email
	Sep 26 - 30	Application Review >> Booth confirmation via email
PHASE II: ≥4 booths		
(Eligibility: consecutively exhibiting in Sino-Dental over 3 years and with no less than 4 booths)		
# OF BOOTHS	DATE	PROCEDURE
≥4	Oct 10 - Oct 27	Application Submission via email
	Nov 18 - Nov 29	Application Review>> Booth Confirmation via email or fax >> Deposit Payment
	Before Dec 5	Unqualified companies would be informed to participate in the next phase or to submit supplementary materials
Please be noticed that any early, late or incomplete applications will be regarded as invalid.		
PHASE III: 1-3 booths		
(Eligibility: meets the basic qualifications, and/or fails to meet the requirement of PHASE II)		
# OF BOOTHS	DATE	PROCEDURE
1-3	Nov 25 -Dec 5	Application Submission via email (for Overseas exhibitors only)
	Dec 6 (10 A.M, Friday)	Hotline call-in for domestic exhibitors
	Dec 23 and after	Application Review >> Booth Confirmation >> Deposit Payment

II. Booth Reservation and Qualification Review Principles

1. General Principles

- (1) 3 different booking phases in accordance with the number of booths applied.
- (2) Within the same phase, priority of booth allocated is based on the score (please refer to the scoring principles and criteria).
- (3) In the case of same booth scale with similar score, the principle of “first come, first served” will apply.

2. Scoring Principles and Criteria

Scoring will be centesimal grading. Please submit all scoring documents according to the **Scoring Principles and suggestions** listed above. The score of each item will be capped as indicated.



If you prefer to continue to use the scoring documents submitted for **Sino-Dental® 2018** with some supplementary materials, please specify in the application form.

CATEGORY	SCORE
1 . INNOVATION 35%	
Intellectual property rights documents; Authoritative registration documents such as FDA, CE, etc.	1-3 points for each valid document, max 15
New products/technology debut/launching (globally or in China)	1-2 points for each valid document, max 6
Innovative cutting-edge technology with independent IP	1-3 points for each valid document, max 6
NMPA green path or similar priority qualifications, industry breakthrough, etc.	1-3 points for each valid document, max 8
2. BRAND 20%	
Brand, company industrial influence (industry ranking, business data, awards, etc.)	1-3 points for each valid document, max 10
Display image (record of attending influential international exhibitions, booth construction plan, etc.)	1-2 points for each valid document, max 5
International standard certification, ISO quality system certification, etc.	1-3 points for each valid document, max 5
3. WIN-WIN & GREEN 35%	
Previous Sino-Dental® participation record	Based upon historical exhibiting records (1-3 years, 3-10 years, 10-20 years, more than 20 years, max 8 points); exhibition area (1-3 booths, 4-8 booths, over 8 booths, max 4 points); display image, etc.; max 12
Participated in the China-Hospeq Exhibition	According to the exhibition record, exhibition area, 2020 booth application, max 10
Participated in the survey of <i>Sino-Dental® China Industry Report</i> , in the philanthropy activities on <i>Sino-Dental®</i> , and etc.	According to the actual participation and level of involvement, max 10
Energy-saving, eco-friendly, low-consumption: Company ethic, principles and practice; environmental-friendly products or booth construction plan, and etc.	Max 3
4. INTERNATIONAL 10%	
Visitor information of the international clients (e.g. dealers) at <i>Sino-Dental®</i> in 2019	According to the validity and quantity of the information, max 10
5. CREDIBILITY (DEDUCTION ITEM)	
Previous violation of intellectual property rights or disputes recorded by <i>Sino-Dental®</i> (relevant complaints included)	According to the relevant law enforcement records of inspectors kept by <i>Sino-Dental®</i> , etc., based upon the



	level of severity and number of times (1-5 points for each record), max 20
Previous resale, lease and/or sublease of booths	3 years of record will be counted. Based upon the level of severity and number of times (1-10 points for each record), max 30
Violation of booth construction regulations, etc. (relevant complaints included)	3 years of record will be counted. Based upon the level of severity and number of times (1-5 points for each record), max 15
On-site misconducts such as display or sale of fake products or unrelated products, etc.	3 years of record will be counted. Based upon the level of severity and number of times (1-5 points for each record), max 15
Other conducts that has affected the on-site exhibition order, or undermined the fairness of booth reservation, etc.	3 years of record will be counted. Based upon the level of severity and number of times (1-8 points for each record), max 20

III. Working Principles

1. Sino-Dental® will further improve the company entry mechanism, and strictly review the relevant qualifications of the exhibitors as requested by the relevant laws and regulations. For first-time exhibitors, please be reminded to submit complete application documents and qualified credible materials for scrutiny purpose.

2. Sino-Dental® is committed to fulfill the obligation of information disclosure. The relevant information will be published in accordance with the information release procedure. Reservation notice and related reminders for materials submission will be send out before the start of each phase. Please be noted that only the applications and submissions sent to info@sinodent.com.cn / sino-dental@qq.com will be proceeded by Sino-Dental®.

A second reminder will be sent out before the deadline for each application phase. Please provide valid and complete contact information in your application. If any changes occur, please timely notify Sino-Dental® to make sure your company will receive the notice in time.

3. Booth booking process is subject to openness and transparency, and all behaviors of fraud, bribery or corruption are strictly prohibited. Once any aforementioned behaviors were detected, the involved staff will be subject to severe punishment, and the involved company will be counted inferior in the credit rating process due to unfair competition. Exhibitors are welcome to report any detection of such behaviors. Your understanding and cooperation will be highly appreciated.



4. Sino-Dental® will collect all the materials submitted by the companies and will not start the inventory and the scoring until the submission deadline of each phase. The criteria indicated in section II will be strictly followed.

5. For the companies fail to return booth confirmation letter or pay the deposit in time, the booth allocation will be canceled, and the relevant booths will be released to the remaining booth pool for open application. Under certain circumstance or with force majeure, the company could formally submit extension application in written-form 3 working days prior to the deadline.

6. Sino-Dental® will strictly abide by the booth allocation criteria and scoring process announced. Booth will be allocated in accordance with both the application and the final score. Sino-Dental® has strict working and authorization procedure for booth allocation, in which at least 3 levels of approval will be executed. Once a decision has been made, Sino-Dental® will inform the company to confirm the booth allocation and pay the deposit via booth confirmation letter. The contract will be issued in due course upon the receipt of booth deposit.

7. To protect the legitimate right of the companies involved and the visitors, any resale, lease or sublease of booths is strictly prohibited. If any violation were detected, Sino-Dental® reserves the right to cancel the booth and record the violation for score deduction.

8. Sino-Dental® prohibits any form of infringement of others' intellectual property. Once detected, Sino-Dental® will cease to proceed any booth application from the company involved, and record the violation for score deduction in future applications.

IV. Booth Reservation Reminders

1. Companies should submit the booth application form and addition documents, and the **scoring documents** to Sino-Dental® through email (info@sinodent.com.cn/ sino-dental@qq.com) or fax (+86-10-88393924) (booth application form is available online) **prior to the deadline.**

Please assure the application form is completely and clearly filled out with printed letters. The scoring documents are not mandatory, and thus no scores will be deducted if the company did not submit the document for scoring: the related category will only be counted as zero. Unqualified companies will not be eligible for booth application.

2. Booth Application Principle applies for all companies. Please submit all documents according to the booking schedule. Companies in Phase II should send application forms and all relevant documents via email or fax. Sino-Dental® will allocate booths together after reviewing the documents. Companies in Phase III should submit the



application documents **after** the email/hotline call-in pre-reservation. The higher scored exhibitors will have the priority for booth allocation and booth adjustment.

Domestic companies who fail to submit application documents in 7 days after hotline reservation will be regard as invalid reservation. For the companies that have deduction scores, Sino-Dental® reserves the right to cancel or postpone the booth allocation.

3. Sino-Dental® will confirm the booth with each company via email or fax. After receiving confirmation letter, please confirm the letter by signing and sending it back, and make the deposit payment (RMB 3,000 per booth) prior to the deadline, otherwise the booth will not be reserved.

4. For the exhibitors that have participated in Sino-Dental® in three or more consecutive years, maintained certain exhibition scale, and scored in 3 or more categories listed in Scoring Criteria and with no deducted scores, will have the priority to apply for the expansion of exhibition area.

5. Any re-sale, lease or sublease of booths to other companies in any shape or form before and during the exhibition is strictly prohibited. If any violation was detected, Sino-Dental® reserves the right to cancel the booth and prohibit the company from exhibiting in the following year. Any economic or legal consequence shall be borne by the violator itself.

6. Majority of the exhibition areas are raw space. The exhibitors for raw space will be responsible for their own qualified construction (please refer to official contractor for construction principles). For standard booth application, please choose the booth in the designated area. Otherwise, the reservation will be deemed as invalid.

7. Sino-Dental® reserves the right to adjust any booth under the consideration of overall exhibition arrangement.

8. This notice is subject to changes. Please refer to the official website for the most updated notice.

Sino-Dental® Organizing Committee
September 27, 2019



Sino-Dental® 2020 Booth Application Form

Please be aware that this application form is requested to be completely and clearly filled out with printed letters.

I. Company Profile

Company Name					
	(In Chinese, if any)				
Contact Person		Position		Mobile	
Tel		Fax		Email	
Mailing Address				Postcode	

II. Business and Product Category

We are	<input type="checkbox"/> Manufacturer	<input type="checkbox"/> Dealer	<input type="checkbox"/> Agency	<input type="checkbox"/> Media	<input type="checkbox"/> Association
	<input type="checkbox"/> Others, please specify:				
Our exhibits category	Please tick the corresponding items in the appendix (compulsory)				

III. Booth Application (Please refer to the floor plans for your choice)

Step 1. Please specify:

- Raw Space (Conference Area: F1, F3, F4; Exhibition Area: F1).
- Standard Booth (B1, F4)

Step 2. Please fill in the blank for your booth choice (minimum unit: 9 sqm /1 booth):

F1(CNCC Exhibition Area)	_____sqm raw space	Booth No.	
F1(CNCC Conference Area)	_____sqm raw space	Booth No.	
B1	_____sqm raw space (or _____standard booths)	Booth No.	
F3	_____sqm raw space	Booth No.	
F4	_____sqm raw space (or _____standard booths)	Booth No.	
Please refer to CNCC layout floorplan for the locations of the exhibition halls.			

Step 3. Application Submission. Each company is requested to submit the scanned copy of relevant certificate documents such as Business License, Registration Certificate, Manufacture Certificate, and etc., together with this application form and its attachment to info@sinodent.com.cn or sino-dental@qq.com. The application will only be proceeded upon the receipt of all the requested documents listed above. The booth will be allocated



following the Sino-Dental® reservation rules and Sino-Dental® reserves the right to adjust booth arrangements.

IV. Scoring Documents Submission

The document number should correspond to the name of the submitted documents. If there are more materials submitted, a separate form can be attached. (If inaccurate classification affects the score, Organizing Committee will not bear the responsibility). If the company did not submit the document for scoring: the related category will only be counted as zero (except for deduction items).

Please specify if your company wish to use the scoring documents submitted in 2019:

- We will use the scoring documents previously submitted for Sino-Dental® 2019, and other supplementary materials are listed below
- We prefer not to use the scoring documents submitted for Sino-Dental® 2019. Please refer to this new submission

<i>Number</i>	<i>Item</i>	<i>category</i>	<i>Description of submitted document (1.2.3....)</i>

Example (only for your reference):

<i>Number</i>	<i>Item</i>	<i>Category</i>	<i>Description of submitted document (1.2.3....)</i>
1	Innovation	Independent intellectual property right	1. Patent certificate
2	Innovation	Industry-leading technology	2. NMPA green path authentication
3	Brand	International Standard Certification	3. ISO90001 authentication
4	Brand	Company image	4.Photos and Catalog of exhibition in 2019 IDS

V. Contact Information

Website: www.sinodent.com.cn/en

Email: info@sinodent.com.cn / sino-dental@qq.com

Contact Person: Ms. Taylor XIN (daily service), Ms. Carol KANG (chief coordinator).

Tel: +86-10-88393883/3917

Fax: +86-10-88393924

Company Seal:

Submission Date:



Category of Exhibits

➤ Please tick the corresponding exhibits of your company in the table below

Number	Category
1	Dental Practice
1.1	Dental Units
10101	Dental equipment systems
10102	Other equipment elements
10103	Dentist's and dental assistant's elements
1.2	Lighting Systems
10201	Operating lights
10202	Ambient lights
10203	Accessories for lighting systems
1.3	Suction, Separator and compressed Air Systems
10301	Suction devices
10302	Separating devices
10303	Surgical suction devices
10304	Air compressors
1.4	Chairs
10401	Working stools
10402	Patient chairs
10403	X-ray chairs
1.5	Practice Furniture
10501	Cabinets for treatment area
10502	Reception furniture
10503	Furniture for waiting-rooms
10504	Accessories for practice furniture
1.6	Visual Systems
10601	Photographic systems
10602	Image receptor holders (right-angle holders)
10603	Digital image receiver
10604	DVT radiographic devices
10605	Intraoral cameras
10606	Radiographic image viewers
10607	Radiographic image chemicals
10608	Radiographic films
10609	Radiographic film development equipment
10610	Radiographic devices

	1.7	Dental Materials
	10701	Impression materials
	10702	Amalgam alloys
	10703	Etching agents and adhesives
	10704	Fixing materials
	10705	Bite registration materials
	10706	Composites
	10707	Finished crowns
	10708	Temporary crowns + bridges materials
	10709	Temporary sealants
	10710	Root filling materials
	10711	Cements
	1.8	Special Devices
	10801	Anaesthetising equipment
	10802	Bite registration devices / Functional analysis
	10803	Bleaching systems
	10804	CAD/CAM systems (D)
	10805	Surgical motor systems
	10806	Diagnostic devices
	10807	Dosing and mixing devices
	10808	Electrosurgical devices
	10809	Endodontic measuring devices
	10810	Endodontic motor systems
	10811	Color selection devices
	10812	Hydrocolloid conditioners
	10813	Laser devices (D)
	10814	Light polymerisation devices (D)
	10815	Implantation navigation devices
	10816	Ozone-therapy devices
	10817	Devices for physical therapy
	10818	Powder jet devices
	10819	Snoring treatment equipment
	10820	Ultrasonic devices (D)
	10821	Vitality testing devices



1.9	Consumables special equipment	1.12	Driving Devices and Handpieces
10901	Precious metal	11201	Handpieces (general)
10902	Ceramic	11202	Tubes and connections
10903	Plastic	11203	Ultrasonic / Sonic handpieces
10904	Non-precious metal	11204	Special contra-angles
10905	Titanium	1.13	Hand Instruments
1.10	Pharmaceuticals	11301	Impression trays
11001	General pharmaceuticals for dental treatment	11302	Evacuation cannulae
11002	Analgesics	11303	Bite registration instruments
11003	Antibiotics	11304	Surgical instruments
11004	Antiseptiques / Oral disinfectants	11305	Filling instruments
11005	Desensitizers	11306	Injection instruments
11006	Diagnostics	11307	Injection cannulae
11007	Endodontic preparations	11308	Orthodontic instruments
11008	Haemostatics	11309	Matrix systems / Matrix holders
11009	Bone-regeneration compounds	11310	Measuring instruments
11010	Local anaesthetics	11311	Periodontal instruments
11011	Periodontal remedies	11312	Scalpels
11012	Pulp protecting agents	11313	Spatula
1.11	Work Aids and Auxiliary Materials for Dental Treatment Purposes	11314	Examination instruments
11101	Impression aids	11315	Tooth cleaning instruments
11102	Color shade guides	11316	Pliers
11103	Glass items for surgery organization	1.14	Rotary Instruments
11104	Tranquilisers and aids for anxiety attacks	11401	Diamond instruments
11105	Auxiliaries for implant planning	11402	Tungsten carbide instruments
11106	Instrument stands/trays	11403	Ceramic abrasives
11107	Orthodontic supplies	11404	Finishers
11108	Cofferdam	11405	Steel instruments
11109	Microscopes / Magnifiers	11406	Root canal instruments
11110	Mixing bowls/Mixing slabs	1.15	Oscillating Instruments
11111	Suture materials	11501	Sonic instruments
11112	Products for emergency cases	11502	Ultrasonic instruments
11113	Occlusion test work aids	1.16	Implant Dentistry
11114	Operating-theatre drapes	11601	Augmentation products
11115	Patient-condition monitoring during an operation	11602	Implants
11116	Devices for plasma medicine	11603	Implantation instruments
11117	Polishing materials	11604	Connecting parts for supra reconstructions
11118	Material for dressing	1.17	Retention anchors and pins
11119	Cotton rolls / Tampon strips	11701	Parapulpal pins
11120	Root canal points	11702	Root canal anchors



	1.18	Prophylaxis/Dental and oral hygiene
	11801	Patient information work aids
	11802	Prophylactic equipment
	11803	Interdental brushes
	11804	Oral irrigators
	11805	Plaque detectors
	11806	Prophylactic remedies
	11807	Sealants
	11808	Tooth brushes, electromechanic and ultrasonic
	11809	Toothbrushes, manual
	11810	Toothpaste
	11811	Dental care products
	11812	Denture adhesives
	11813	Denture care
	11814	Dental floss
	1.19	Cosmetic dentistry
	11901	Cosmetic dentistry supplies
	11902	Bleaching materials
	2	Dental laboratory
	2.1	Functional equipment for dental laboratories
	20101	Work benches
	20102	Functional cabinets
	20103	Plaster bins
	20104	Plaster benches
	2.2	Functional systems for dental laboratories
	20201	Evacuation equipment
	20202	Lighting systems
	20203	CAD/CAM systems
	20204	Plaster processing systems
	20205	Ceramic processing systems
	20206	Synthetic resin processing systems
	20207	Alloy processing systems
	20208	Wax processing systems
	2.3	CAD/CAM material
	20301	Precious metal
	20302	Ceramic
	20303	Synthetic resin
	20304	Non-precious
	20305	Titanium

	2.4	Dental laboratory equipment
	20401	Blasting devices
	20402	Boiling-out and steam jet devices
	20403	Burners
	20404	Dosing and mixing devices
	20405	Milling devices
	20406	Galvanic devices
	20407	Casting machines
	20408	Ceramic furnaces
	20409	Soldering and welding devices
	20410	Model trimmers
	20411	Parallelometers / Surveyors
	20412	Polishing devices
	20413	Polymerisation devices
	20414	Presses
	20415	Silicone mixer
	20416	Deep drawing devices
	20417	Vibrators
	20418	Preheating ovens
	20419	Additional devices for dental laboratories
	20420	Sintering furnaces
	20421	3D printing devices
	2.5	Modelling materials
	20501	Modelling plastics
	20502	Waxes
	2.6	Model materials
	20601	Plasters
	20602	Model resins
	2.7	Materials for inlays, crowns and bridges
	20701	Ceramic materials
	20702	Synthetic resins for inlays, crowns and bridges
	20703	Metals/alloys (inlays, crowns and bridges)
	2.8	Denture materials
	20801	Magnet systems
	20802	Model casting alloys
	20803	Denture base polymers
	20804	Materials for individual impression trays etc.
	20805	Materials for orthodontic equipment



2.9	Work Aids and Materials for dental laboratory purposes
20901	General work aids and auxiliary materials for dental laboratory purposes
20902	Duplicating materials
20903	Investment materials
20904	Instrument stands
20905	Insulating materials
20906	Adhesives
20907	Flasks / Muffles
20908	Solders
20909	Soldering aids
20910	Model base and splitcast systems
20911	Model pins
20912	Polishing materials
20913	Deep drawing foils and plates
2.10	Motors and handpieces
21001	Articulators
21002	Handpieces
21003	Engines
2.11	Hand instruments
21101	Mixing instruments
21102	Plaster knives and saws
21103	Measuring instruments
21104	Modelling instruments
21105	Laboratory pliers
2.12	Rotary tools
21201	Diamond instruments
21202	Tungsten carbide burs and grinders
21203	Ceramic abrasives
21204	Finishers
21205	Steel burs and grinders
2.13	Orthodontic construction elements
21301	Orthodontic expansion and other screws
21302	Orthodontic wires a.o.
21303	Orthodontic brackets
2.14	Reconstruction auxiliaries
21401	Anchors
21402	Wires
21403	Attachments

2.15	Prefabricated mouldings
21501	Assembled bridges
21502	Plastic mouldings
21503	Temporary crowns
21504	Wax mouldings
2.16	Artificial teeth
21601	Ceramic teeth
21602	Acrylic resin teeth
3	Infection control and maintenance
3.1	Sterilization/Disinfectant devices and auxiliaries
30101	Disinfecting devices
30102	Disinfectant dispensers
30103	Sumps for instrumental disinfectants
30104	Sealing equipment
30105	Cleaning and disinfection devices
30106	Sterilization control agents
30107	Sterilization wrappings
30108	Sterilizer
30109	Tray and other container systems
3.2	Disinfectants (chemical)
30201	Impression and denture disinfectants
30202	Decontaminating agents for evacuation equipment
30203	Disinfectants for surfaces
30204	Disinfectants for hand and skin
30205	Disinfectants for instruments
30206	Instrument cleaning and disinfecting agents
30207	Water disinfection
3.3	Professional and protective clothing
30301	Professional clothes
30302	Gloves (medical)
30303	Light and laser protection
30304	Protective goggles
30305	Protective gloves (maintenance)
30306	Protective masks
30307	Protective wraps
3.4	Professional and protective clothing
30401	Cleaning agent
30402	Cleaning and maintenance devices
30403	Technical maintenance work aids
30404	Ultrasonic cleaning devices



4	Services, information, communication and organization
4.1	Services
40101	Accountancy
40102	Training and further education
40103	Banks, insurance companies, transport of valuable goods
40104	Disposal
40105	Trade associations, institutions
40106	Production and maintenance of dental prostheses
40107	Marketing and marketing communication
40108	Quality management
40109	Service offerings for dental equipment, drivetrains and tools
40110	Consulting
40111	Support for validation of cleaning, disinfection and sterilization procedures
4.2	Electronic data processing solutions for
40201	Implant planning systems
40202	Surgical robots
40203	dental practice
40204	dental laboratory
4.3	Information, organization and communication work aids
40301	Filing systems
40302	Demonstration and training models
40303	Forms
40304	Communication systems
40305	Organizational software
40306	Recall systems
40307	X-ray file systems
40308	Safety systems/equipment
4.4	Media
40401	Professional books
40402	Professional journals
40403	Informational and educational software
40404	Internet and online services

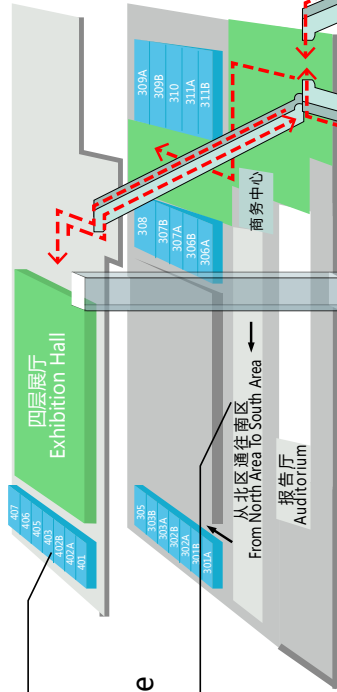


Sino-Dental® 2020

第25届中国国际口腔设备材料展览会
暨技术交流会

Sino-Dental®

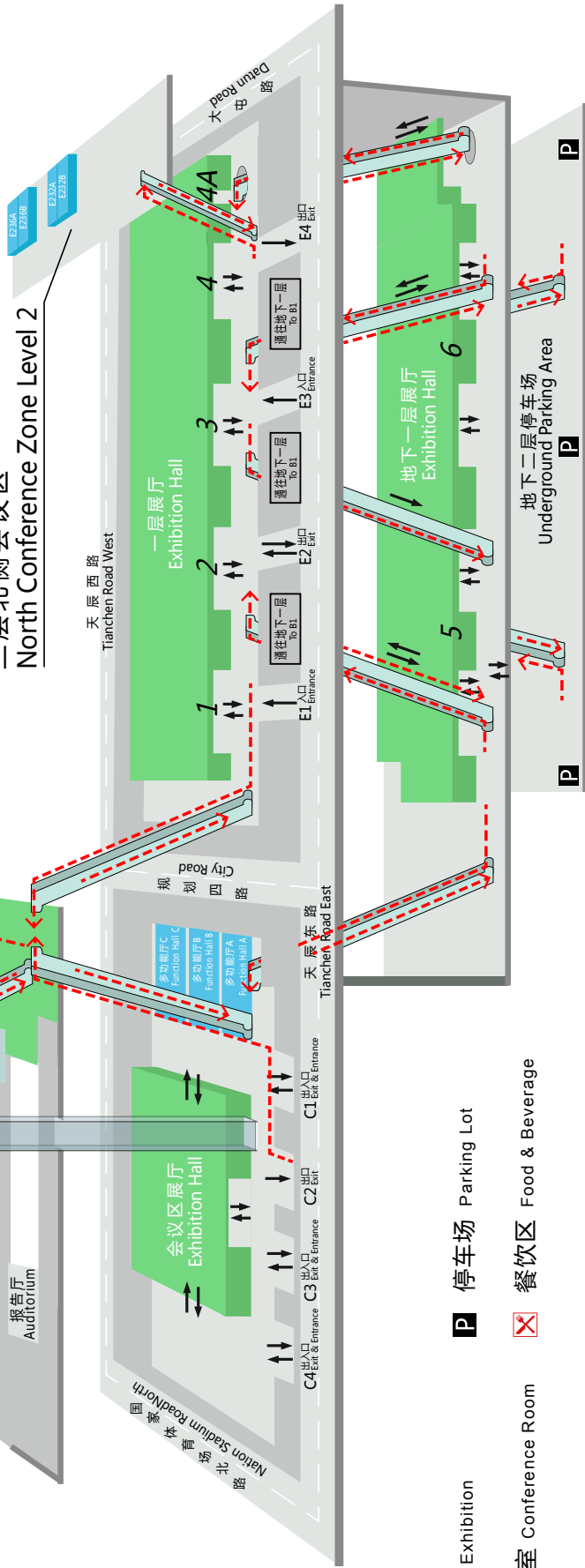
四层会议区
Conference Zone
Level 4



三层会议区
Conference Zone
Level 3



二层北侧会议区
North Conference Zone Level 2



- 展览 Exhibition
- 会议室 Conference Room
- P 停车场 Parking Lot
- X 餐饮区 Food & Beverage

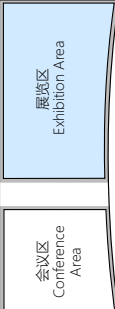
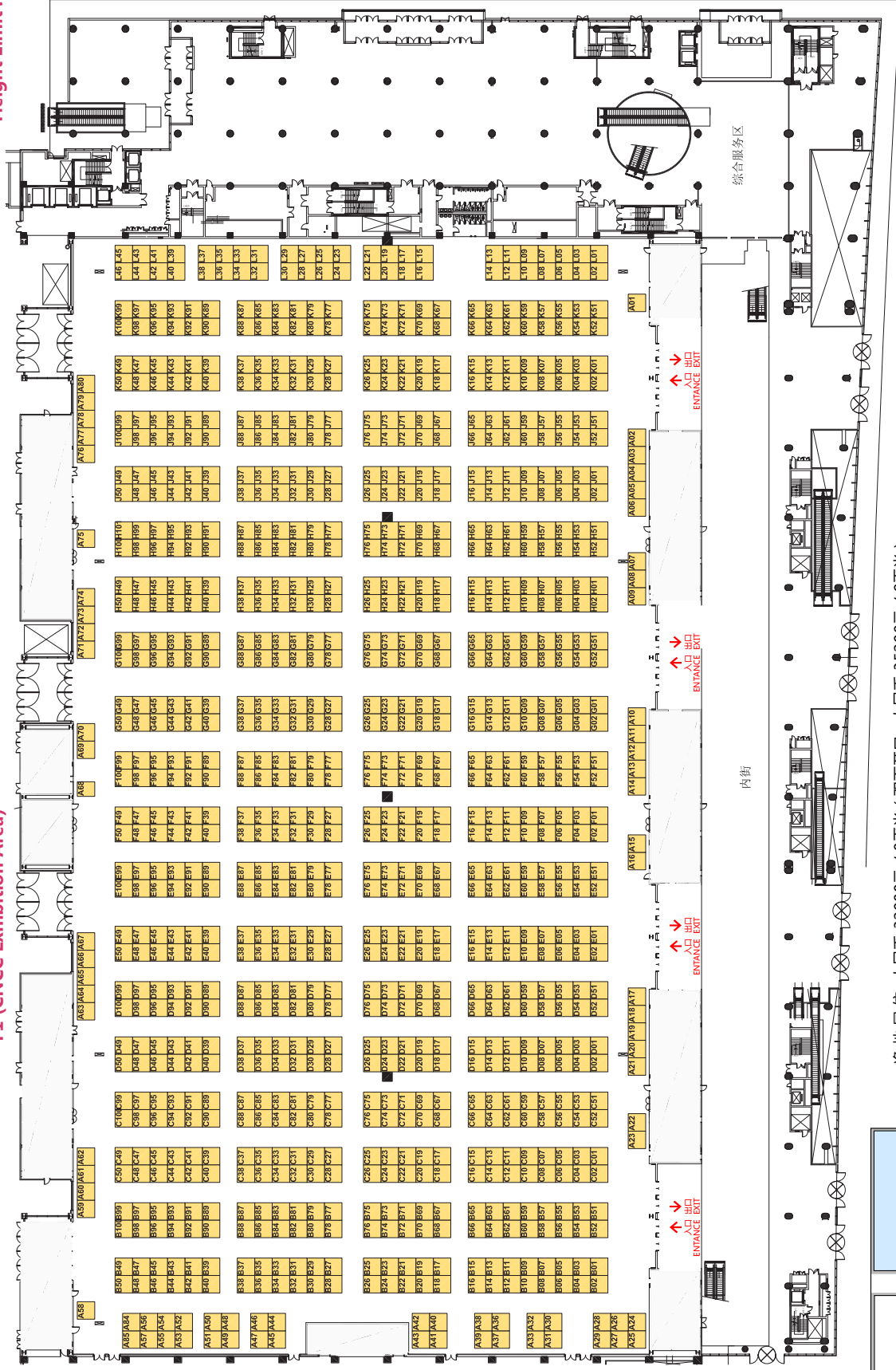


第二十五届中国国际口腔设备材料展览会暨技术交流会
Sino-Dental 2020
展览区一层平面图

限高: 5米

Height Limit: 5M

F1 (CNCC Exhibition Area)



净地展位: 人民币 32000元 / 9平米 (双面开口: 人民币 35200元 / 9平米)
Raw space: RMB 32,000/9sq meters (RMB 35,200/9sq meters for corner booth)

展位图可能调整, 请以网站最新公布的版本为准。

This floorplan is subject to changes. Please refer to our official website www.sino-dental.com.cn for the latest updated version.



第二十五届中国国际口腔设备材料展览会暨技术交流大会
Sino-Dental 2020
地下一层平面图

限高: 3.5米, V排展位限高: 2.5米
Height Limit : 3.5M, V01-V33 Height Limit : 2.5M

B1 (CNCC Exhibition Area)



标准展位/净地展位: 人民币 21600元 / 9平米 (双面开口: 人民币 23760元 / 9平米) ■ 柱子 (1.1m x 0.7m)
Raw space / Standard booth : 21,600RMB/9sqm (Corner booth 23,760RMB/9sqm) ■ Pillar

■ 此处柱子有消防栓, 包柱请留开口
■ Fire hydrant in the pillar, please leave an opening when covering pillar

展位图可能调整, 请以网站最新公布的版本为准。
This floorplan is subject to changes. Please refer to our official website www.sino-dental.com.cn for the latest updated version.



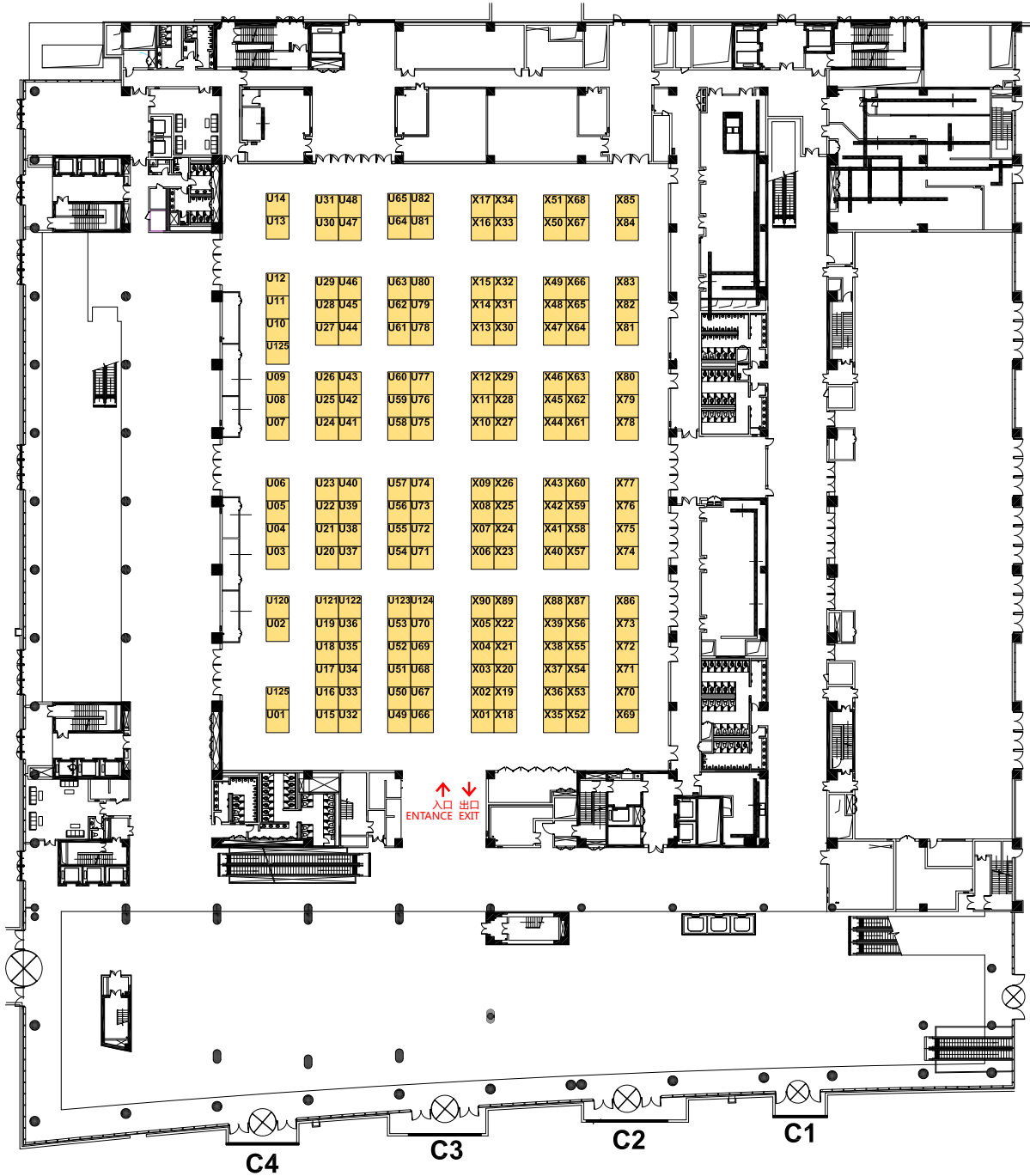
第二十五届中国国际口腔设备材料展览会暨技术交流会
Sino-Dental® 2020

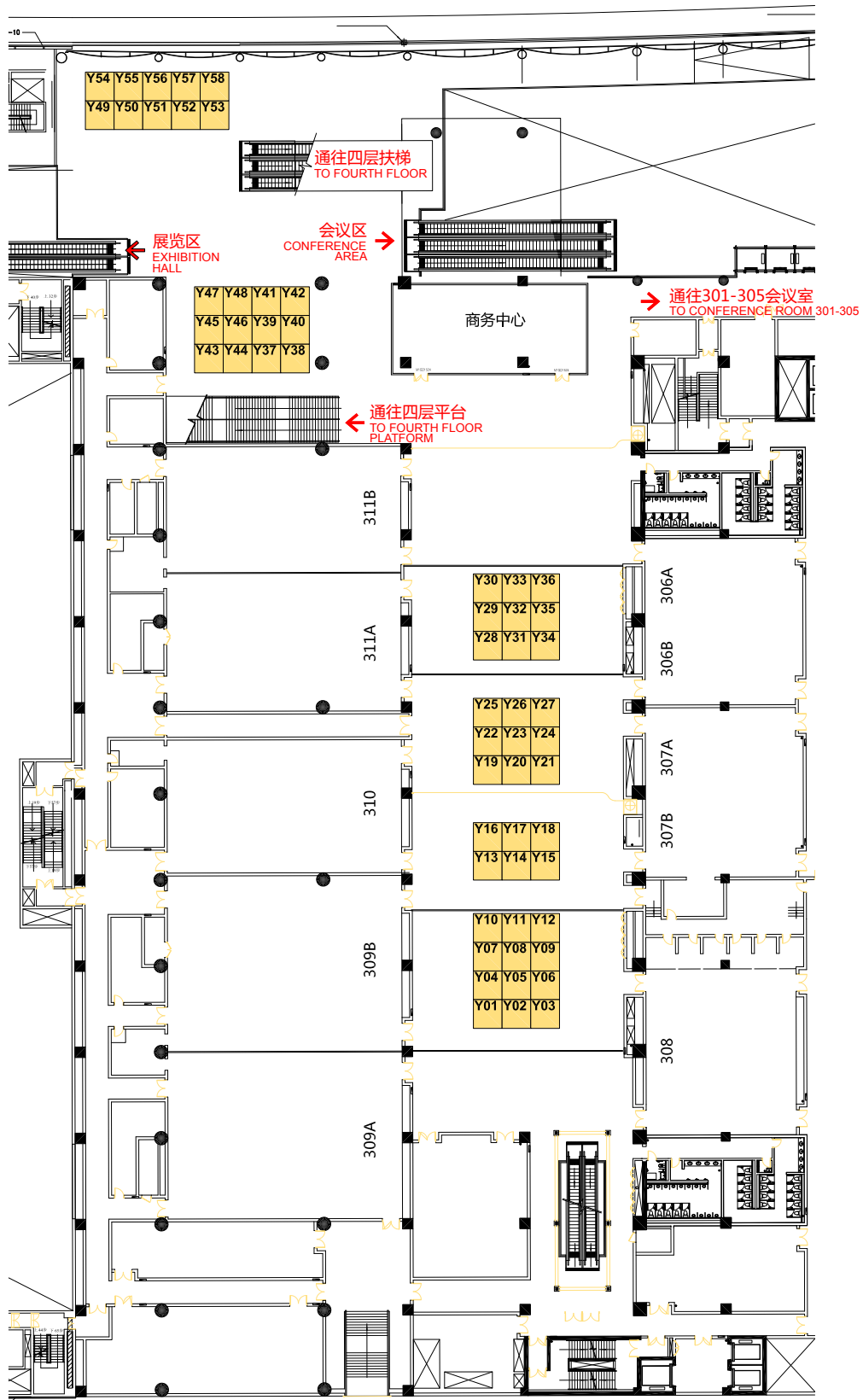
会议区一层平面图

F1 (CNCC Conference Area)

限高: 5米

Height Limit : 5M

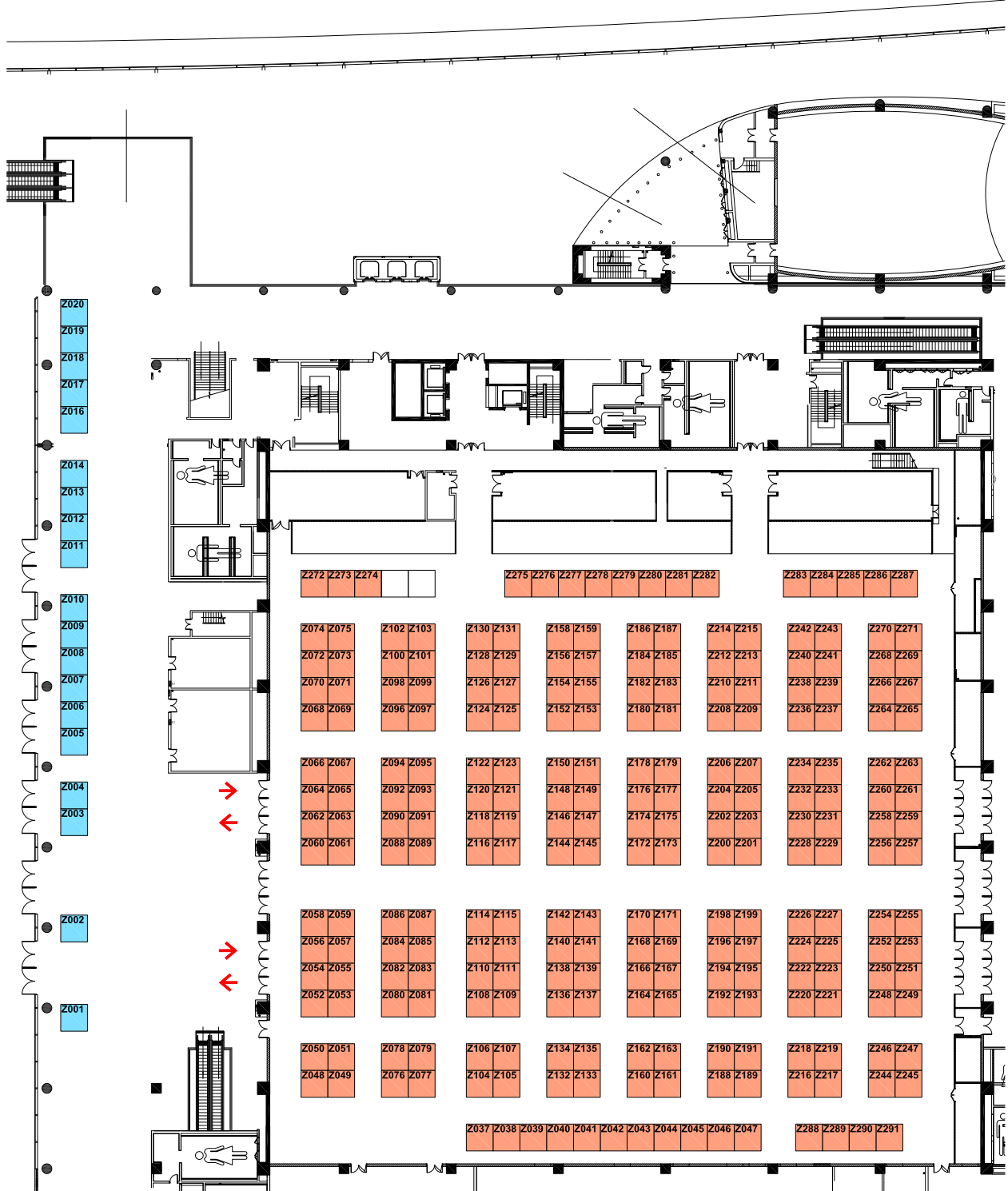




净地展位: 人民币 32000元 / 9平米 (双面开口: 人民币 35200元 / 9平米)
Raw space : RMB 32,000/9sq meters (RMB 35,200/9sq meters for corner booth)

展位图可能调整, 请以网站最新公布的版本为准。

This floorplan is subject to changes.
Please refer to our official website www.sinodent.com.cn for the latest updated version.



净地展位: 人民币 18000元 / 9平米 (双面开口: 人民币 19800元 / 9平米)
Raw space : 18,000RMB/9sqm (Corner booth 19,800RMB/9sqm)

标准展位/净地展位: 人民币 16000元 / 9平米 (双面开口: 人民币 17600元 / 9平米)
Standard booth / Raw space : 16,000RMB/9sqm (Corner booth 17,600RMB/9sqm)

展位图可能调整, 请以网站最新公布的版本为准。

This floorplan is subject to changes.

Please refer to our official website www.sinodent.com.cn for the latest updated version.



Sino-Dental[®]

Contact Us

Ms. Carol KANG, Ms. Taylor XIN

Tel:(86)10 - 88393917/3883

Email:info@sinodent.com.cn

www.sinodent.com.cn/en